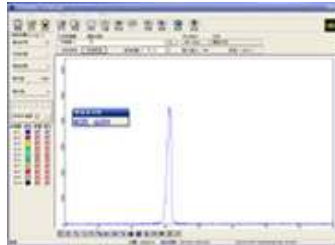


DPSS 1342nm Low Noise Lasers



Specifications:

Model	SDL-1342-LN-XXXT
Wavelength	1342±1nm
Operation Mode	CW, TEM00
Output Power @ 25 °C	500-1000mW
M2 factor	<1.5
Power Stability after warm-up	<1%, <3%, <5% (over 2/4/8 hours)
Noise of amplitude	<1% (RMS, 10Hz - 20MHz)
Warm-up time	<15 minutes
Beam divergence (1/e2, Full Angle)	<2.0mrad
Beam diameter at the aperture	< 3mm
Coherent Length	>1M
Spectral line width	<0.1nm
Polarization ratio	>100:1 (0 or 90 degree)
Point stability after warm-up	<0.05mrad
Operating temperature	10-35°C
Dimension of laser head	156 × 77 × 60mm
Power supply	SDL-PS-500
Dimension of power supply	238 x 146 x 94mm
Expect life time	10000 hours
Warranty time	1 year