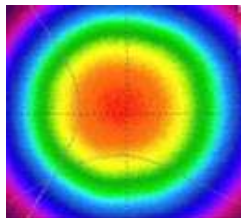
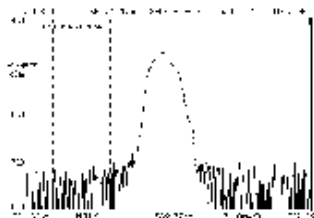


# DPSS 532nm Single Longitude Mode Green Laser



## Specifications:

<b>Model</b>	<b>SDL-532-SLM-XXXT</b>
<b>Output Power @ 25 °C</b>	1~100mW
<b>Wavelength</b>	532nm
<b>Operation Mode</b>	CW
<b>Longitudinal mode</b>	Single
<b>Transverse mode</b>	TEM00
<b>Beam height from base plate (mm)</b>	24.8mm
<b>Linear Polarization</b>	>50:1(45 degree)
<b>Beam Diameter at the aperture</b>	~2.0mm
<b>Beam Divergence (1/e<sup>2</sup>, Full Angle)</b>	<1.5mrad
<b>Power Stability after warm-up</b>	<1%, <3%, <5% (over 2/4/8 hours)
<b>M2 factor</b>	<1.2mm
<b>Warm-up time</b>	<15 minutes
<b>Dimension of laser head</b>	142 x 73 x 46mm
<b>Power Supply</b>	PS-300
<b>Input Voltage</b>	90-264VAC, 50/60Hz
<b>Coherent length (m)</b>	>50M
<b>Dimension of Power Suply</b>	130 x 120 x 62mm
<b>Operating Temperature</b>	10°C~35°C
<b>Expect life time</b>	10000 hours
<b>Warranty time</b>	1 year