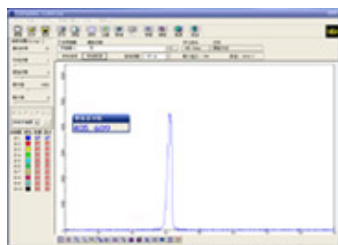


## 405nm Purple Lasers



### Specifications :

<b>Model</b>	<b>SDL-405-XXXT</b>
<b>Wavelength (nm)</b>	405±5nm
<b>Output Power</b>	1-100mW
<b>Energy distributuon</b>	Even
<b>Beam spot</b>	Round
<b>Operating Mode</b>	CW
<b>Power Stability after warm-up</b>	<1%, <3%, <5% (over 2/4/8 hours)
<b>Warm-up time</b>	< 5 minutes
<b>Beam divergence, full angle (mrad)</b>	8. 0mrad
<b>Beam diameter at the aperture</b>	2. 0mm
<b>Beam height from base plate</b>	24.8mm
<b>Pointing stability after warm-up (mrad)</b>	<0.05
<b>Operating temperature (℃)</b>	10~35℃
<b>Power Supply</b>	90-264VAC, 50/60Hz
<b>Modulation</b>	TTL Modulation or Analog Modulation
<b>Expect life time</b>	>10000 hours
<b>Warranty time</b>	1 year