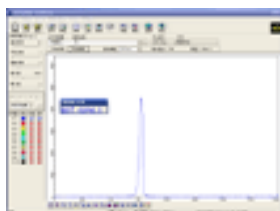


## 808nm Lasers (2W-5W)



### Specifications:

<b>Model</b>	<b>SDL-808-LM-XXXX</b>
<b>Output Power @ 25 °C</b>	2000-5000mW
<b>Wavelength</b>	CW 808±3nm
<b>Operation Mode</b>	TE <sub>00</sub>
<b>Linewidth</b>	<0.1nm
<b>Linear Polarization</b>	>50:1
<b>Beam Diameter at the aperture</b>	5.0-8.0mm
<b>Beam Divergence (1/e<sup>2</sup>, Full Angle)</b>	< 5mrad
<b>Power Stability after warm-up</b>	<1%, <3%, <5% (over 2/4/8 hours)
<b>Wavelength stability</b>	< 0.5nm
<b>Warm-up time</b>	<5 minutes
<b>Dimension of laser head</b>	102 x 39 x 39mm
<b>Power Supply</b>	SDL-PS-200
<b>Input Voltage</b>	85~250VAC, 50/60Hz
<b>Point stability after warm-up</b>	<0.05mrad
<b>Modulation</b>	TTL Modulation >5KHz or analog Modulation >2KHz
<b>Operating Temperature</b>	10°C~35°C
<b>Dimensions of power supply</b>	174 x 75 x 40mm
<b>Expect life time</b>	10000 hours
<b>Warranty time</b>	1 year