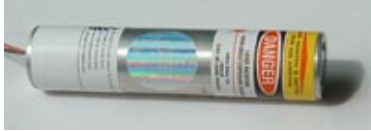


650nm Line Laser (1-150mW)



Specifications:

Model	SDL-650-LM-XXXL
Output Power @ 25 °C	1-150mW
Wavelength	650nm
Dimension	Φ12mm, length 48mm and Φ16mm, length 70mm
Supply voltage	DC3~5V
Operating current	<250mA
Line Angle	30°,45°,60°,90°,110°,130°
Line Width	<1mm (1M)
Optics	glass lens both sides AR coated
Wire length	150mm
Operating temperature	-10°C~+40°C
Storage temperature	-40°C~+80°C
Expect life time	>3000 hours
Warranty time	6 months

Shanghai Dream Lasers Technology Co., Ltd.