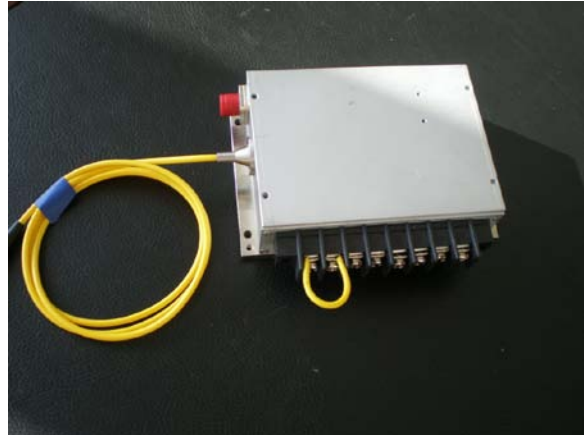


940nm 12W Fiber Coupled Laser Diode (LD) Module with HHL Package | Blue Green Red Aiming Beam
940nm|12W Output Power| HHL Package| 200um 400um Fiber Core| High Power Pigtailed LD|TEC Cooling
WSLB-940-012-H **Wavespectrum Laser Group** **www.wavespectrum-laser.com**

PARAMETER	SYMBOL	VALUE	UNIT
Reverse Voltage	V_r	2.0	V
Operating Temperature	T_{op}	+10 ~ +30	°C
Storage Temperature	T_{stg}	-20 ~ +80	°C
Lead soldering temperature (10 sec.)	T_{is}	260	°C

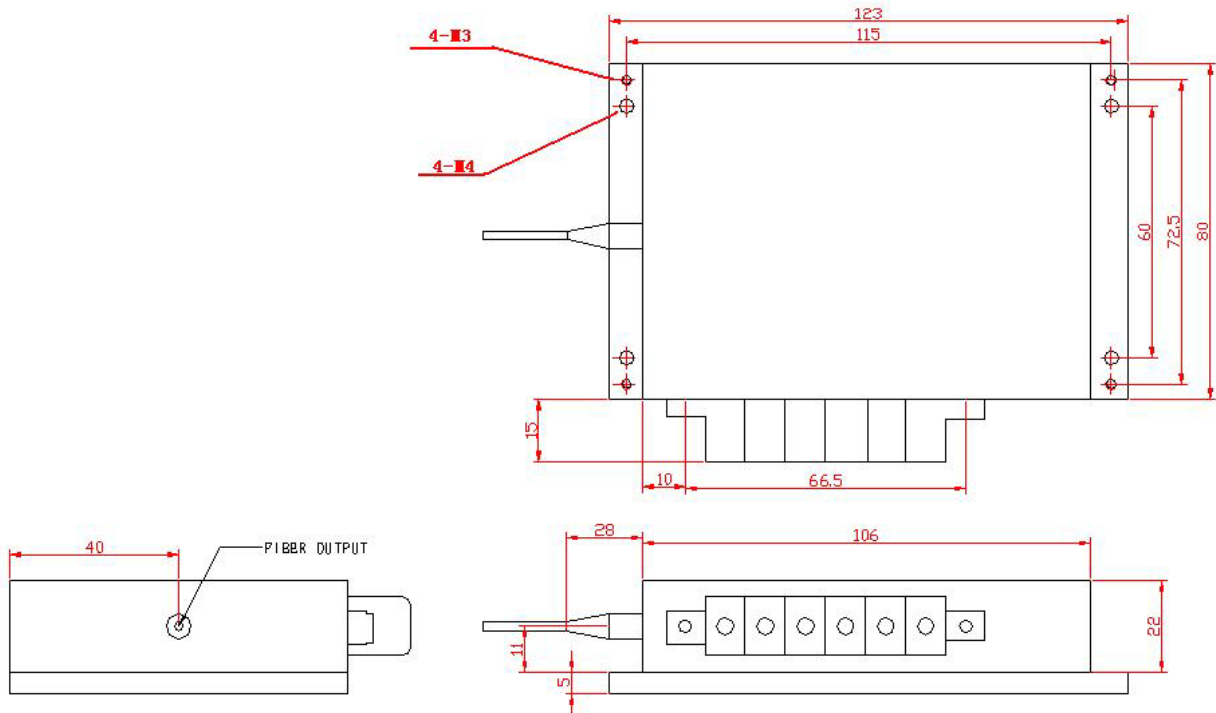
Features: <ul style="list-style-type: none"> ● 940nm ● Built-in TEC Cooling Optional ● Aiming Beam Optional ● Photodiodes Optional ● Stainless Steel Armor Optional
Applications: <ul style="list-style-type: none"> ● Medical laser treatment ● Pumping ● Others



Specifications	WSLB-940-012-H		
	Min.	Type	Max.
Center Wavelength@25°C	±3nm	940nm	±10nm
Spectral Width (FWHM)	----	3nm	----
Output Power	----	12W	----
Temperature Coefficient of Wavelength	----	0.3nm / °C	----
Threshold Current (Typ.)	----	300mA	----
Operating Current (Typ.)	----	3.3A	----
Operating Voltage		8V	
Cooling	TEC Cooling Optional		
Fiber Core Diameter	300um		
Fiber Numerical Aperture	0.22		
Fiber Length	100cm		
Connector Type	FC (SMA905 Optional)		
Package	P2 Package		
Aiming Beam	Red (Blue ,Green Optional)		



Package View



PIN	1	2	3	4	5	6
	LD(+)	LD(-)	RT	RT	TEC(-)	TEC(+)

Wavespectrum offer **Customized 940nm Fiber Coupled LD.**

Please let me know your special request:

- Customized Output Power
- Customized Fiber
- Customized Fiber Connector

Contact us with info@wavespectrum-laser.com

Electrically shorten LD module and store in non-extreme conditions.

Suggest using the constant current power supply.



Wavespectrum Laser, Inc.
www.wavespectrum-laser.com
wavespectrumlaser@gmail.com

