

1064nm 15W Fiber Coupled Laser Diode (LD) Module |Red Aiming Beam | Photodiode Optional

1060nm~1064nm|15W Output Power| 400um Fiber Core| High Power LD|TEC Cooling

WSLB-1064-015-H

Wavespectrum Laser Group

www.wavespectrum-laser.com

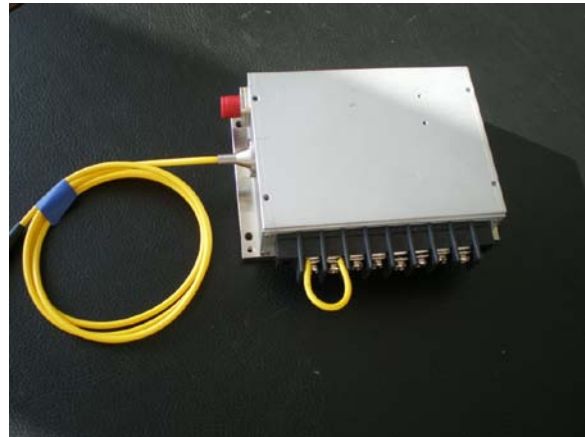
PARAMETER	SYMBOL	VALUE	UNIT
Reverse Voltage	V_r	2.0	V
Operating Temperature	T_{op}	+10 ~ +30	°C
Storage Temperature	T_{stg}	-20 ~ +80	°C
Lead soldering temperature (10 sec.)	T_{is}	260	°C

Features:

- 1064nm
- **Built-in** TEC Cooling Optional
- Red Aiming Beam Optional
- Photodiodes Optional
- Stainless Steel Armor Optional

Applications:

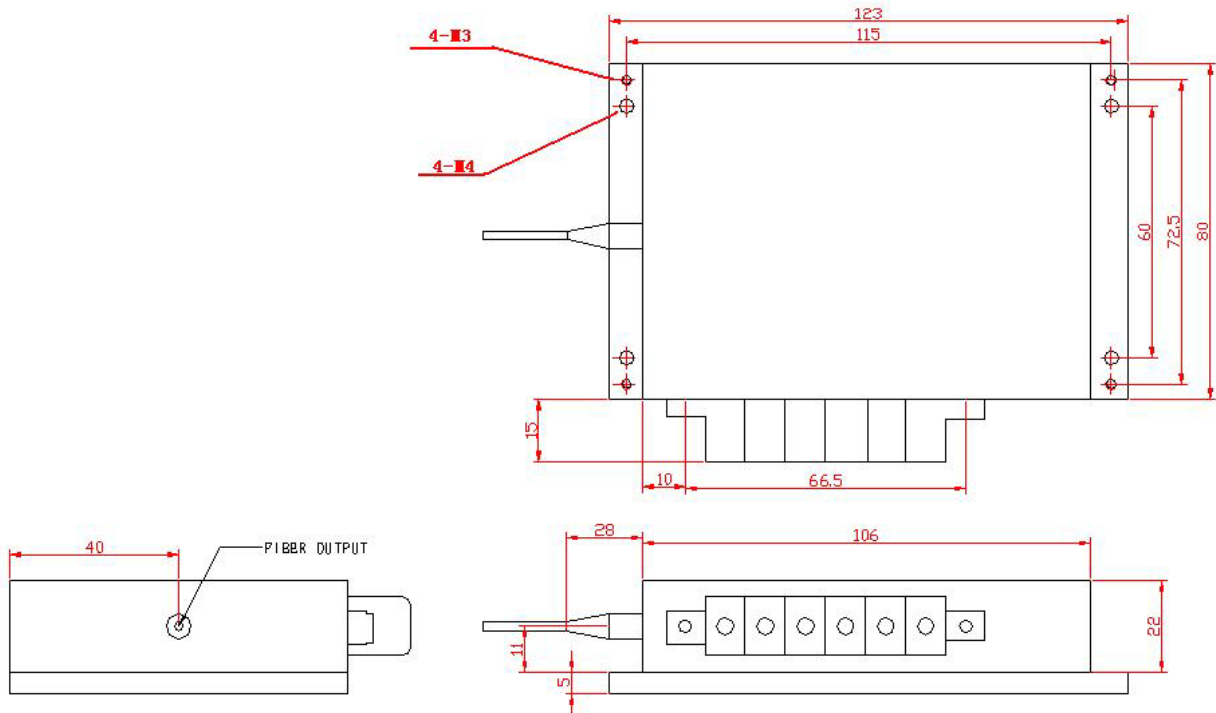
- Medical laser treatment
- Night Vision
- Others



Specifications	WSLB-1064-015-H		
	Min.	Type	Max.
Center Wavelength@25°C	±3nm	1064nm	±10nm
Spectral Width (FWHM)	----	3nm	----
Output Power	----	15W	----
Temperature Coefficient of Wavelength	----	0.3nm / °C	----
Threshold Current (Typ.)	----	350mA	----
Operating Current (Typ.)	----	3.5A	----
Operating Voltage		15V	
TEC Cooling	Optional		
Fiber Core Diameter	<400um		
Fiber Numerical Aperture	0.22		
Fiber Length	100cm		
Connector Type	SMA905/ST/FC		
Package	P2 Package		
Aiming Beam	Optional (Red/ Green /Blue)		



Package View



PIN	1	2	3	4	5	6
	LD(+)	LD(-)	RT	RT	TEC(-)	TEC(+)

Wavespectrum offer **Customized 1064nm Fiber Coupled LD**.

Please let me know your special request:

- Customized Output Power
- Customized Fiber
- Customized Fiber Connector

Contact us with info@wavespectrum-laser.com

Electrically shorten LD module and store in non-extreme conditions.

Suggest using the constant current power supply.



Wavespectrum Laser, Inc.
www.wavespectrum-laser.com
wavespectrumlaser@gmail.com

