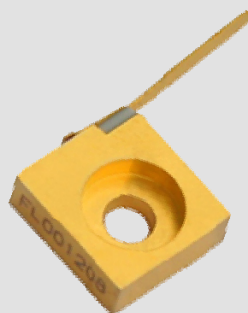


FOCUSDEVICE™

C-mount Single Emitter Diode Laser (CW)

CM01



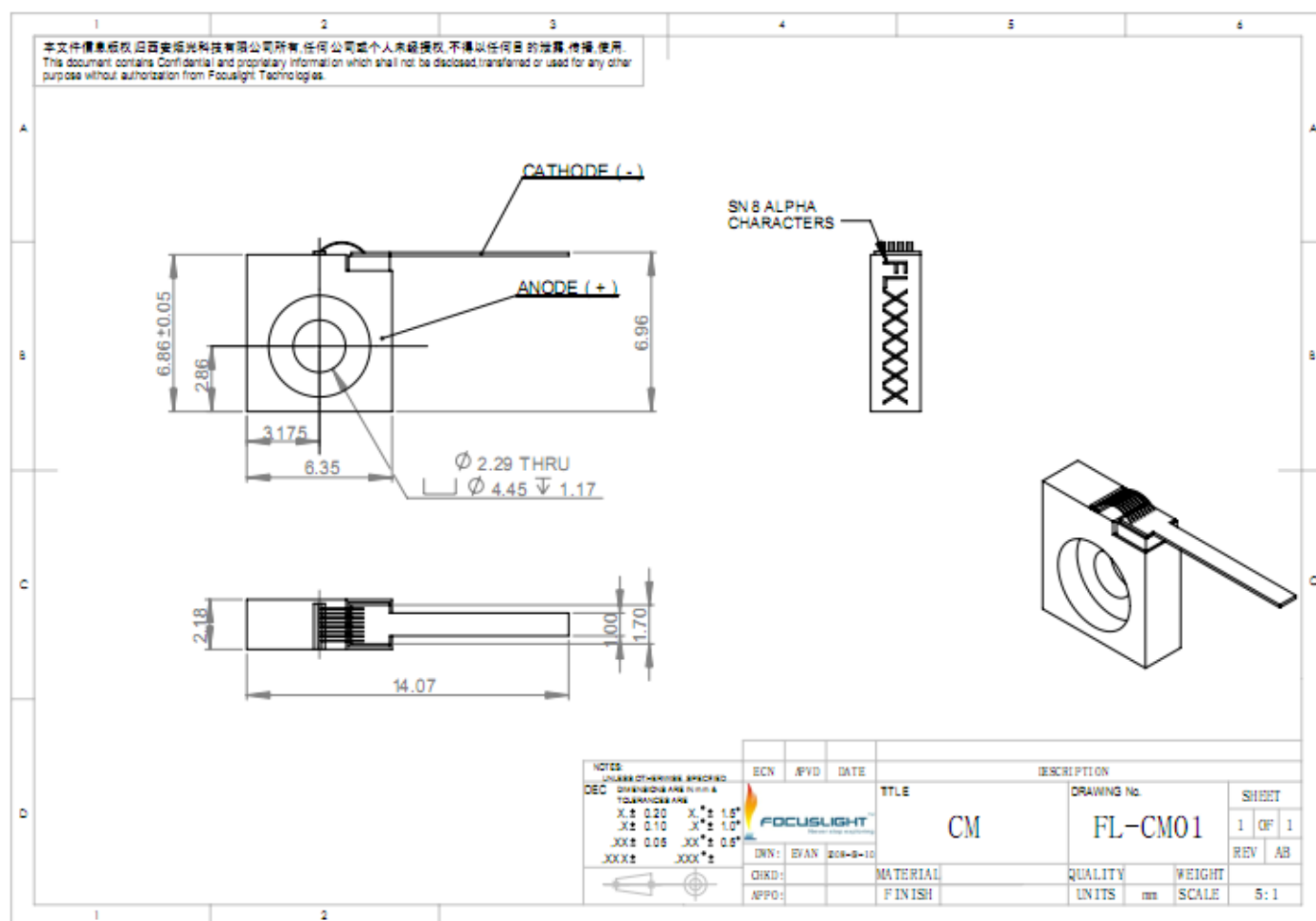
Features

- High reliability
- High Stability
- AuSn bonding
- Harsh environmental applications

Applications

- Display
- Industry
- Scientific research
- Pumping
- Medical

Device Dimension (mm)



This structure drawing is only for reference. More structure drawings can be found below the datasheet.

For any other special requirement, please feel free to contact us.

Specification

Module Type ¹	Units	FL-CM01-5-808
Optical ²		
Center Wavelength λ	nm	808
Wavelength Tolerance	nm	± 3
Output Power ³	W	5
Spectral Width FWHM	nm	≤ 3
Spectral Width FW90%E	nm	≤ 4
Fast Axis Divergence(FWHM) ⁴	degree	35
Slow Axis Divergence (FWHM)	degree	8
Polarization Mode	-	TE
Wavelength Temp. Coefficient	nm/°C	~ 0.28
Electrical Parameters ²		
Operating Current I_{op}	A	≤ 5.6
Threshold Current I_{th}	A	≤ 1
Operating Voltage V_{op}	V	≤ 2
Slope Efficiency	W/A	≥ 1.05
Power Conversion Efficiency	%	≥ 46
Thermal Parameters		
Operating Temperature	°C	15~30
Storage Temperature ⁵	°C	0~55
Recommended Heatsink Capacity	W	≥ 10

¹FL(abbreviation of Focuslight) -CM01(structure code) -5(output power) -808(center wavelength)

²Data at 25°C temperature, unless otherwise stated.

³Reduced lifetime if used above nominal operating conditions.

⁴For fast axis collimation: divergence $< 5^\circ$.

⁵A non-condensing environment is required for storage and operation below ambient dew point.

If there are any other requirements, please contact us



Focuslight Technologies Inc.

Add: 56 Zhangba 6th Road, High-Tech Zone
Xi'an, Shaanxi 710077, P. R. China

Tel: +86 29 8956 0050

Fax: +86 29 8177 5810

Email: sales@focuslight.com.cn

Website: www.focuslight.com.cn

Copyright ©2015 Focuslight. All rights reserved.

