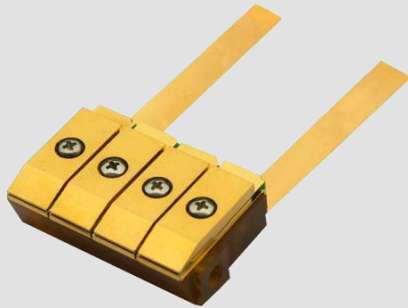


FocusEngine™

Micro-Channel Water Cooled Horizontal Array Diode Laser (CW)

HA23



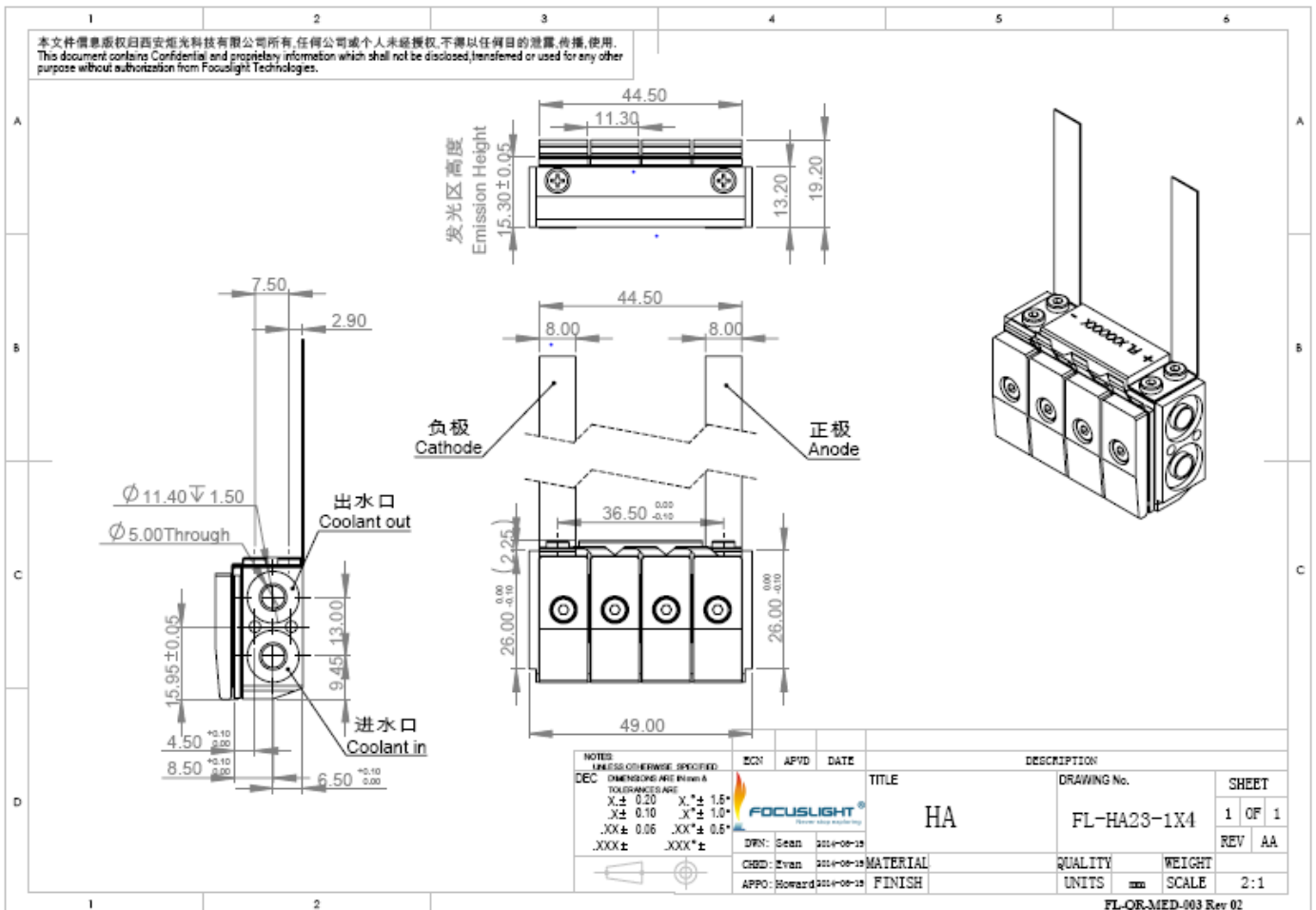
Features

- Long lifetime
- High power
- Narrow spectrum
- Ease of repair

Applications

- Pumping
- Industry
- Research

Device Dimension (mm)



This structure drawing is only for reference. The above drawings is for 4 bars .For any other special requirement, please feel free to contact us.

Specification

Module Type ¹	Units	FL-HA23-1XN-60XN-780	FL-HA23-1XN-50XN-808
Optical ²			
Center Wavelength λ	nm	780	808
Wavelength Tolerance	nm	± 3	± 3
Output Power per Bar	W	60	50
Available Number of bars	-	3,4,6	3,4,6
Bar-to-Bar Spacing	mm	1.8	1.8
Spectral Width FWHM	nm	≤ 4	≤ 4
Spectral Width FW90%E	nm	≤ 6	≤ 6
Fast Axis Divergence(FWHM)	degree	35	35
Slow Axis Divergence (FWHM)	degree	8	8
Polarization Mode	-	TE/TM	TE/TM
Wavelength Temp. Coefficient	nm/°C	~ 0.28	~ 0.28
Electrical Parameters ³			
Operating Current I_{on}	A	≤ 70	≤ 65
Threshold Current I_{th}	A	≤ 15	≤ 25
Operating Voltage V_{on} ³	V	≤ 2	≤ 2
Slope Efficiency ³	W/A	≥ 1.1	≥ 1.1
Power Conversion Efficiency	%	≥ 48	≥ 48
Thermal Parameters			
Operating Temperature ⁴	°C	20~30	20~30
Storage Temperature ⁵	°C	0~55	0~55
Coolant	-	Deionized Water	Deionized Water
Flow Rate ³	L/min	0.3~0.4	0.3~0.4
Max Inlet Pressure	kPa	380	380
Conductivity	$\mu S/cm$	< 5	< 5

¹ FL(abbreviation of Focuslight) –HA23(structure code) -1XN(Number of Bars) -##(Power) -780/808(center wavelength).

² Data at 25°C temperature, unless otherwise stated.

³ Parameters for single Bar.

⁴ Reduced lifetime if used above nominal operating conditions.

⁵ A non-condensing environment is required for storage and operation below ambient dew point.

If there are any other requirements, please contact us.



Focuslight Technologies Inc.

Add: 56 Zhangba 6th Road, High-Tech Zone

Xi'an, Shaanxi 710077, P. R. China

Tel: +86 29 8956 0050

Fax: +86 29 8177 5810

Email: sales@focuslight.com.cn

Website: www.focuslight.com.cn

Copyright ©2015 Focuslight. All rights reserved.

