

Vsilk™ Conduction Cooled Vertical Stack Diode Laser

AA10



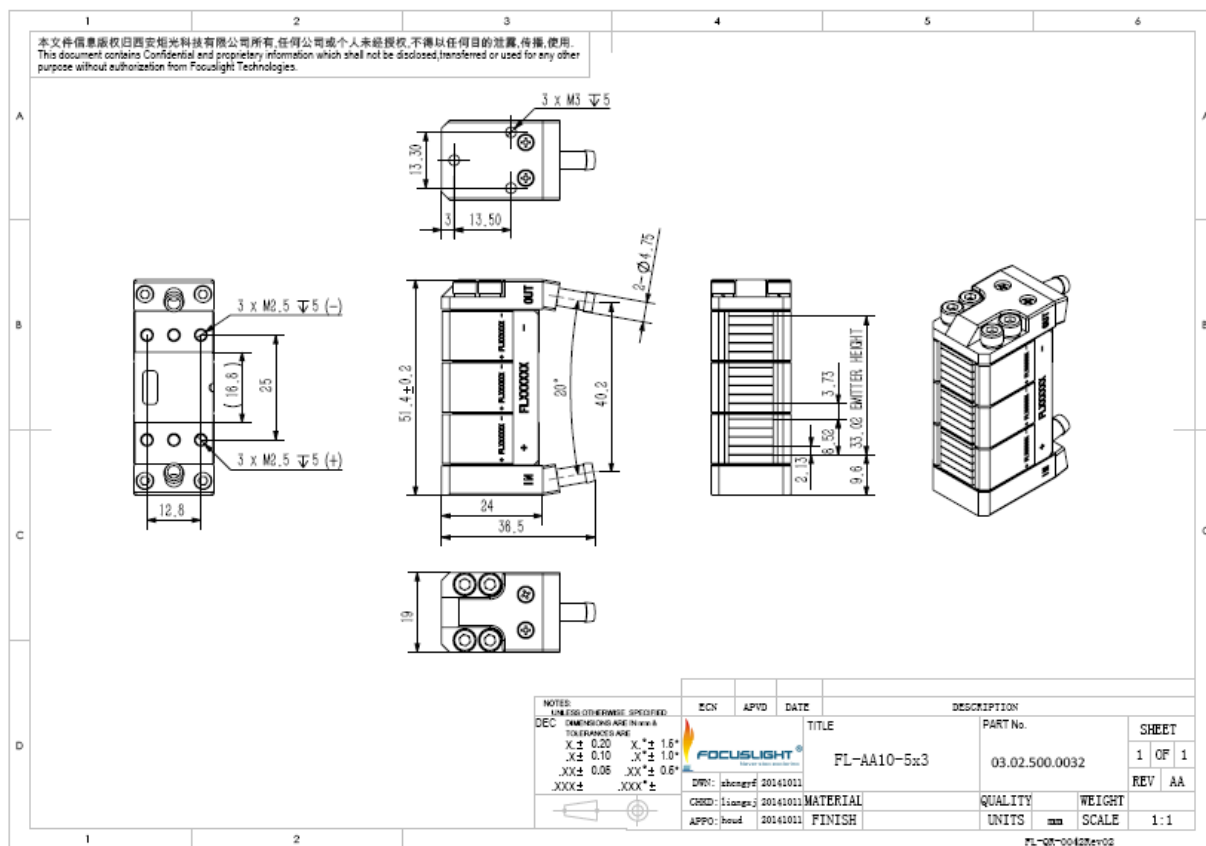
Features

- | | |
|--|---|
| <ul style="list-style-type: none"> • Hard solder bonding • Modular design&easy repair • Tap water cooling • Uniform beam | <ul style="list-style-type: none"> • High Power • Long lifetime • High reliability |
|--|---|

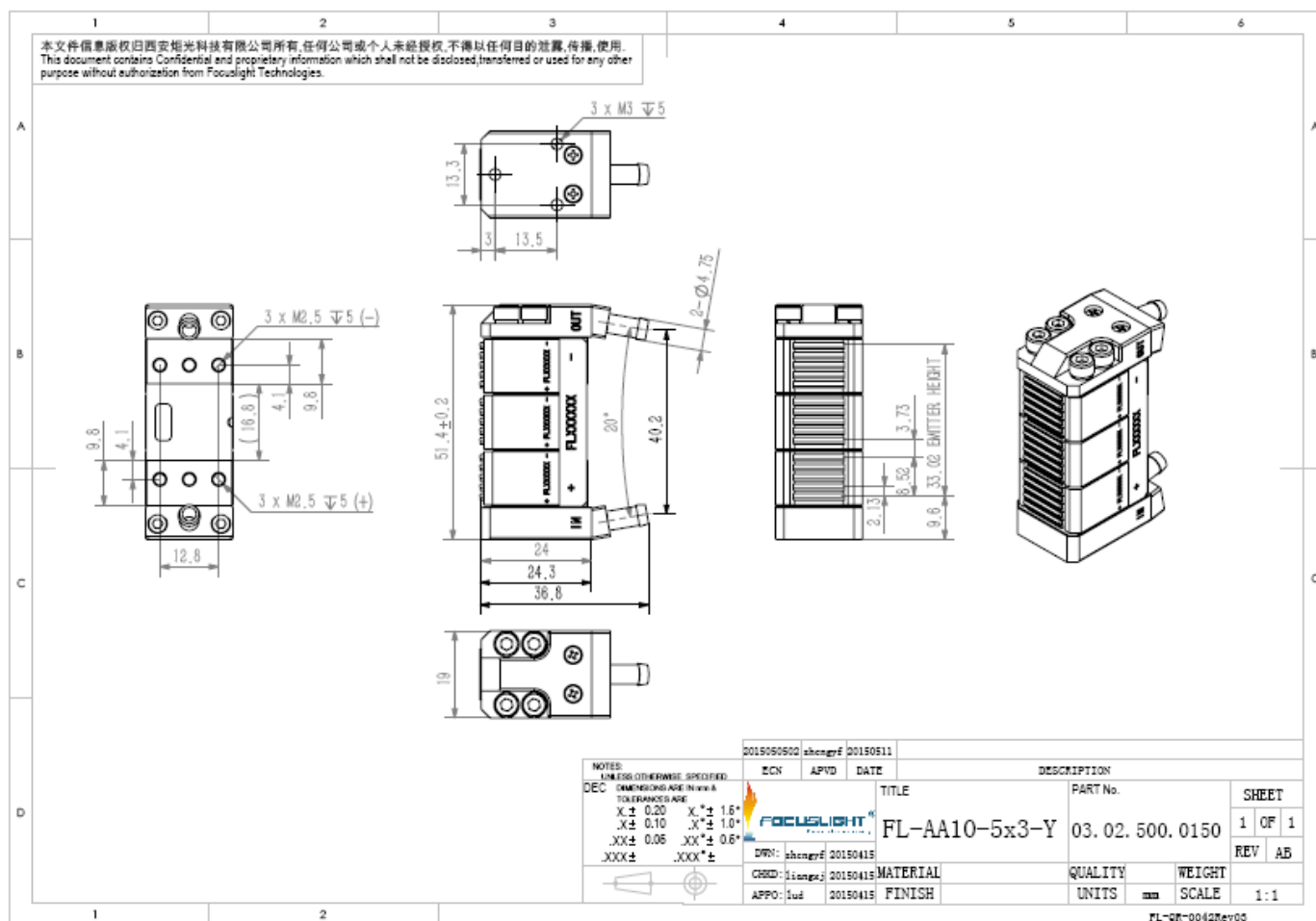
Applications

- Hair removing

Device Dimension(mm)



AA10-5X3 Product Drawing



AA10-5X3-Y Product Drawing of FAC

Specification

module type ¹	units	FL-AA10-5*3-1500	FL-AA10-5*3-1500-Y
Operating Mode		QCW	QCW
Pulse Width	ms	≤100	≤100
Duty Cycle	%	≤20	≤20
Pitch	mm	2.1	2.1
Structure Dimension	mm	51 X19 X36.5	51 X19 X36.8
Coolant	-	Tap water (purified water recommended)	Tap water (purified water recommended)
Flow Rate	L/min	2~4	2~4
Max Inlet Pressure	M Pa	≤0.38	≤0.38
Optical ^{3,5}			
Center Wavelength λ	nm	808	808
Wavelength Tolerance	nm	±15	±15
Output Power per Bar ²	W	100	100
Number of Bars	-	15	15
Fast Axis Divergence (FWHM)	°	35	2~10
Slow Axis Divergence (FWHM)	°	8	8
Polarization Mode	-	TE	TE
Wavelength Temp. Coefficient	nm/°C	~0.28	~0.28
Electrical Parameters ^{3,5}			
Operating Current I_{op}	A	≤115	≤115
Threshold Current I_{th}	A	≤30	≤30
Operating Voltage per Bar V_{op}	V	≤30	≤30
Slope Efficiency per Bar	W/A	≥1.1	≥1.1
Power Conversion Efficiency	%	≥48	≥48
Thermal Parameters			
Cooling Water Temperature	°C	25 ±3	25 ±3
Storage Temperature ⁴	°C	0~55	0~55

¹Explanation for the name of Module Type: FL (abbreviation of Focuslight) –AAxx (structure code) –N (number of bars) –X (output power) –# (center wavelength)(Q:QCW).

²Reduced lifetime if used above nominal operating conditions.

³Data at 25°C, unless otherwise stated.

⁴A non-condensing environment is required for storage and operation below ambient dew point

⁵If there are any other requirements, please contact us



Focuslight Technologies Inc.

Add: 56 Zhangba 6th Road, High-Tech Zone

Xi'an, Shaanxi 710077, P. R. China

Tel: +86 29 8956 0050

Fax: +86 29 8177 5810

Email: sales@focuslight.com.cn

Website: www.focuslight.com.cn

Copyright ©2015 Focuslight. All rights reserved.



The boundary conditions (Vsilk-1500)

Notice: Focuslight keep improving its products to provide our customers with outstanding quality and reliability. We may make changes to specifications and product descriptions at any time, without notice. In addition, we offer a limited warranty to ensure customer satisfaction. For complete details, please contact our sales representative.

Vsilk-1500 Power Table (Single bar)													
Power(W)/bar		Frequency(Hz)										I _{op}	
		1	2	3	4	5	6	7	8	9	10		
Pulse(ms)	10	100	100	100	100	100	100	100	100	100	100		≤115 A
	20	100	100	100	100	100	100	100	100	100	100		≤100 A
	30	100	100	100	100	90	90	NA	NA	NA	NA		≤85 A
	40	100	100	100	90	NA	NA	NA	NA	NA	NA	Working Condition: Cooling water T =25±3℃; Cooling water flow rate ≥ 2L/min	
	50	100	100	NA	NA	NA	NA	NA	NA	NA	NA		
	60	100	100	NA	NA	NA	NA	NA	NA	NA	NA		
	70	100	NA	NA	NA	NA	NA	NA	NA	NA	NA		
	80	100	NA	NA	NA	NA	NA	NA	NA	NA	NA		
	90	100	NA	NA	NA	NA	NA	NA	NA	NA	NA		
	100	100	NA	NA	NA	NA	NA	NA	NA	NA	NA		
	200	65	NA	NA	NA	NA	NA	NA	NA	NA	NA		
	300	50	NA	NA	NA	NA	NA	NA	NA	NA	NA		

1. The use of the above-mentioned conditions, different colors of the operating current (I_{op} will be subject to the actual test report) is only for reference;

2. Not listed in the table above conditions of use, please consult the Focuslight technology.