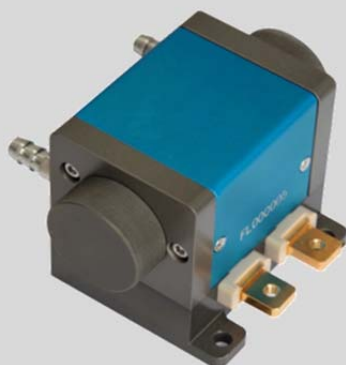


# FocusPump™ SP11-75W CW Pump Module



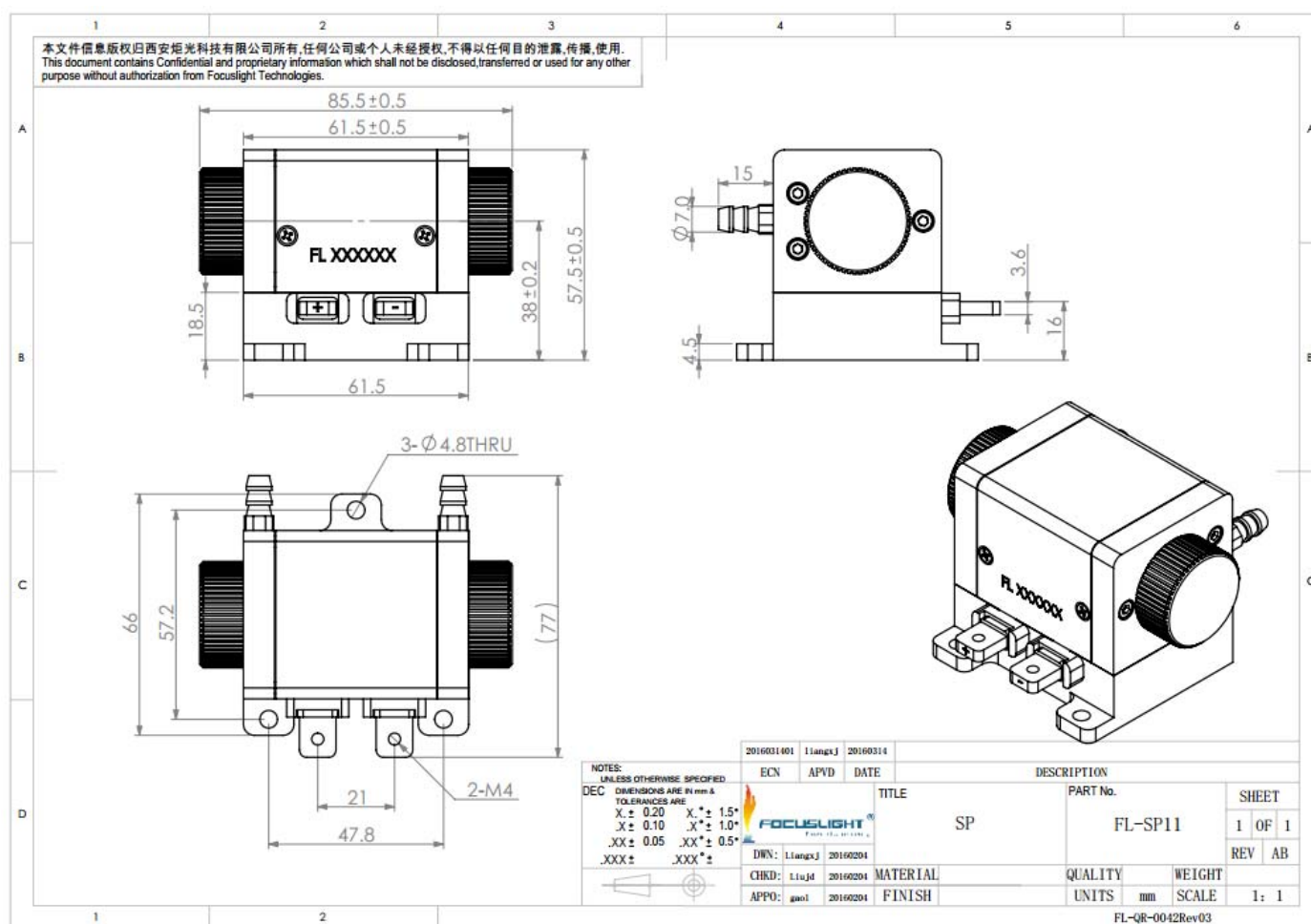
## Features

- Long lifetime
- High coupling efficiency
- High power
- High stability

## Applications

- Pumping
- Scientific research
- Medical
- Industry

## Device Dimension (mm)



# FocusPump™ SP11-75W CW Pump Module

## Specifications

Type <sup>1</sup>	Unit	Parameter
<b>Optical Parameters</b>		
Center Wavelength $\lambda$	nm	1064
Output Power <sup>1</sup>	W	75W
Nd:YAG Crystal	mm	$\Phi 3 \times 72$
Wavelength Temp. Coefficient	nm/°C	$\sim 0.3$
<b>Electrical Parameters</b>		
Operation Current	A	$\leq 28$
Typical threshold current	A	10.5
Typical operation voltage	V	$\leq 18$
<b>Thermal Parameters</b>		
Operating Temperature	°C	25
Water Pressure	MPa	$\leq 0.5$
Water Flow	L/Min	$\geq 4.5$
<b>Package</b>		
Dimensions	mm <sup>3</sup>	75 x 77 x 57.5
Weight basic package	kg	0.45
Storage temperature	°C	-20~+60

<sup>1</sup>:Test Condition: 300mm flat-flat cavity, 80% reflective output coupler.



### Focuslight Technologies Inc.

Add: 56 Zhangba 6<sup>th</sup> Road, High-Tech Zone  
Xi'an, Shaanxi 710077, P. R. China

Tel: +86 29 8956 0050

Fax: +86 29 8177 5810

Email: [sales@focuslight.com.cn](mailto:sales@focuslight.com.cn)

Website: [www.focuslight.com.cn](http://www.focuslight.com.cn)

Copyright ©2015 Focuslight. All rights reserved.

