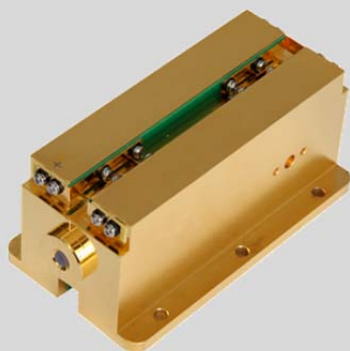


FocusPump™ SP13-6KW QCW Pump Module



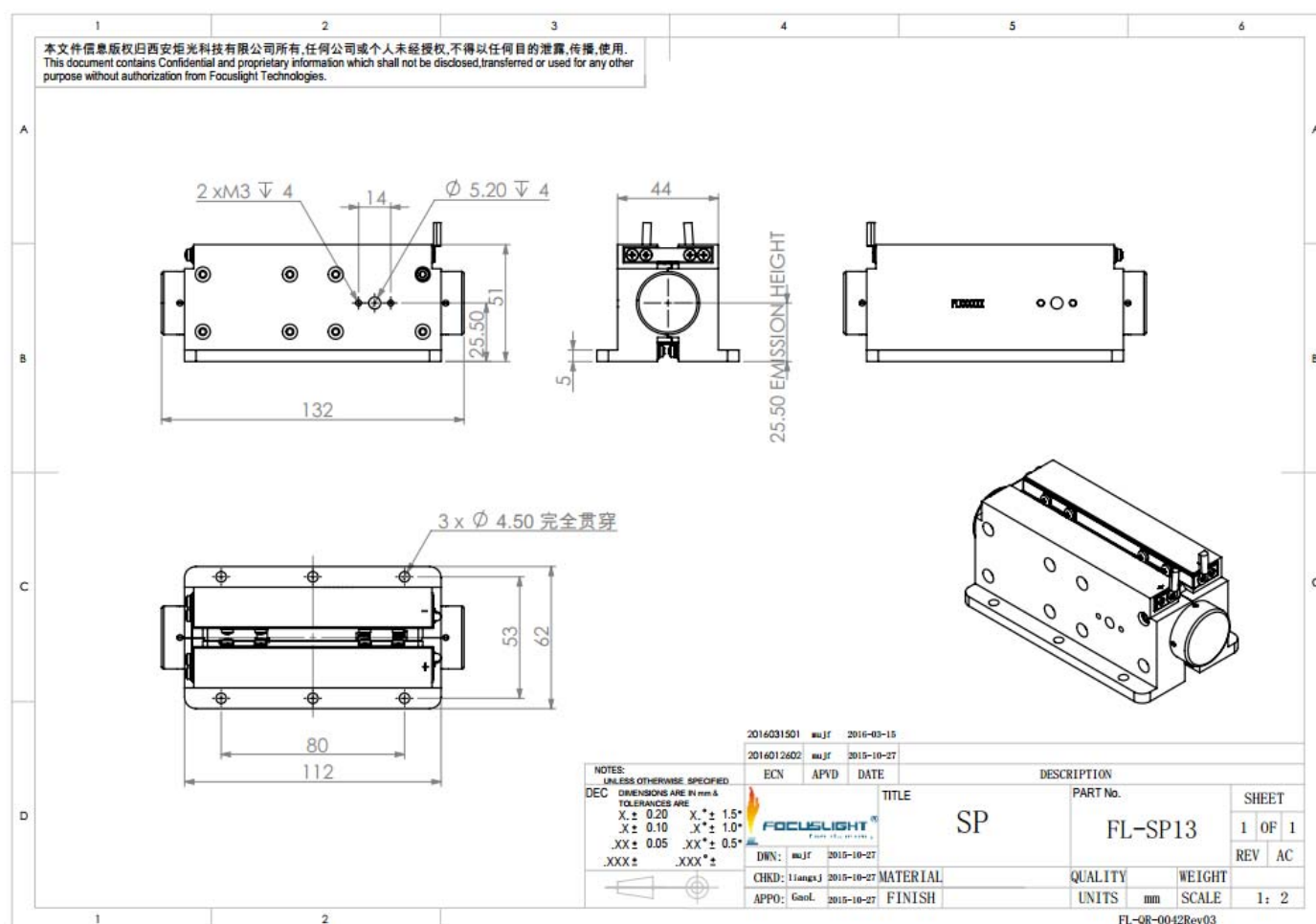
Features

- Conduction-cooled
- Long lifetime
- High peak power
- High stability

Applications

- Industry
- Scientific research
- Medical

Device Dimension (mm)



FocusPump™ SP13-6KW QCW Pump Module

Specifications

Type ¹	Unit	FL-SP13-30-600-808(Q)
Pump Optical Parameters		
Center Wavelength λ	nm	808
Wavelength Tolerance	nm	± 3
Pump Peak Power	W	6000
Pulse Width	μs	≤ 250
Frequency	Hz	≤ 20
Crystal Parameters		
Material	-	Nd:YAG
Diameter	mm	5
Length	mm	120
Electrical parameters		
Operation Current I_{op}	A	≤ 200
Typical Threshold Current I_{th}	A	≤ 40
Typical Operation Voltage V_{op}	V	≤ 62
Thermal Parameters		
Operating Temperature	°C	40
Environment Temperature	°C	-40~60
Storage Temperature	°C	-50~85

¹Explanation for the name of Module Type: FL(abbreviation of Focuslight)-30 (Number of Bars) -6000(Pump peak power)-808(Center wavelength)(Q:QCW);

²If there are any other requirements, Please contact us.



Focuslight Technologies Inc.

Add: 56 Zhangba 6th Road, High-Tech Zone
Xi'an, Shaanxi 710077, P. R. China

Tel: +86 29 8956 0050

Fax: +86 29 8177 5810

Email: sales@focuslight.com.cn

Website: www.focuslight.com.cn

Copyright ©2015 Focuslight. All rights reserved.

