



# Product Updates and News

Wavespectrum June.2018-1

## 488nm Single Mode Fiber Coupled Laser Module

WAVESPECTRUM 488nm blue pigtailed laser diodes use laser welding technology to guarantee the long-term reliability of the laser structure. With SMF, PMF or MMF, it can get more than 20mW output power and gauss beam. To ensure the long-term reliability, each laser diode will undergo rigorous testing and aging in factory. Meanwhile the high-low temperature circulation is also necessary for each laser diode. We set the temperature range from -40°C to +85°C, and it lasts 10 cycles, which will ensure the long-term reliability of the coupling structure. We adopt unique techniques to get the high polarization ratio and low noise.

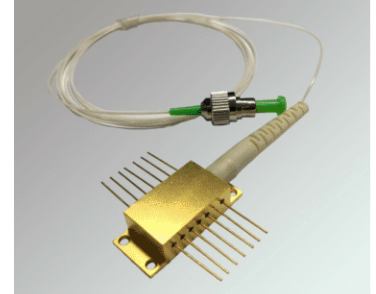


### FEATURE

488nm Blue Diode Laser  
With SM, PM or MM Fiber  
High Stability  
Low Noise  
Long Lifetime

### APPLICATION

Confocal Microscopy  
Laser Spectroscopy  
Fluorescence Microscopy  
Color Holography  
Flow Cytometry

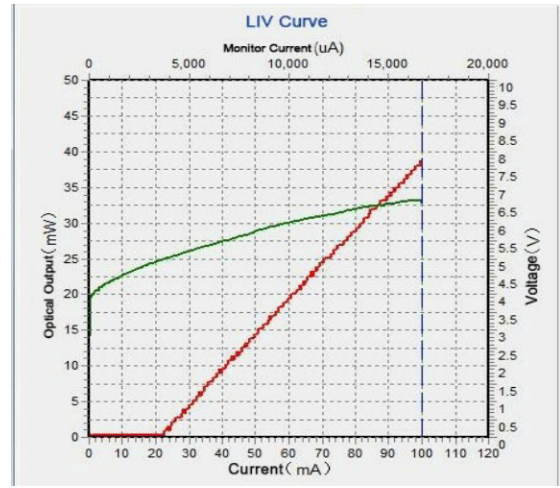
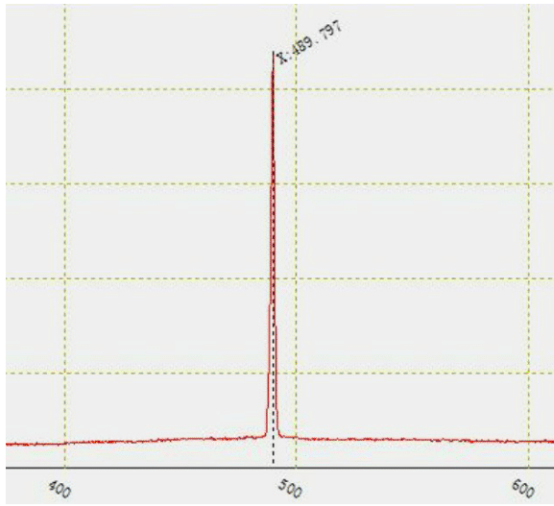


### DATA SHEET

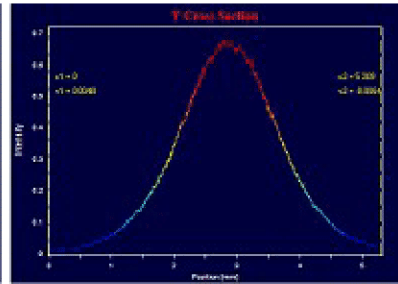
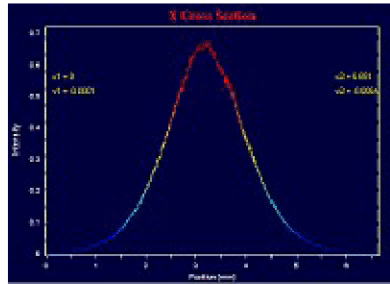
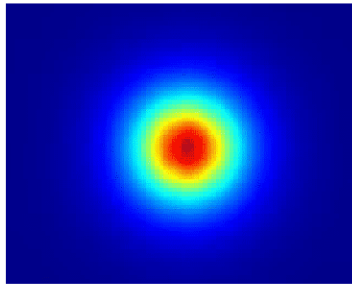
#### 488nm Fiber Coupled Laser Module

Part Number	WL	Output Power	Fiber Type	Fiber Core	Package	PD	TEC	Connector
WSLP-488-020m-4	488nm	20mW	SMF	3um	Coaxial	x	o	FC
WSLP-488-010m-PM	488nm	10mW	PMF	3um	Coaxial	x	o	FC
WSLP-488-040m-M	488nm	40mW	MMF	105um	Coaxial	x	o	FC

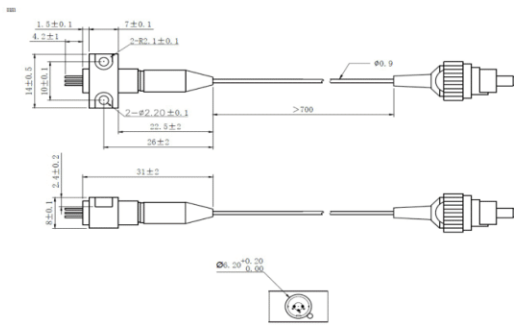
### SPECTRUM



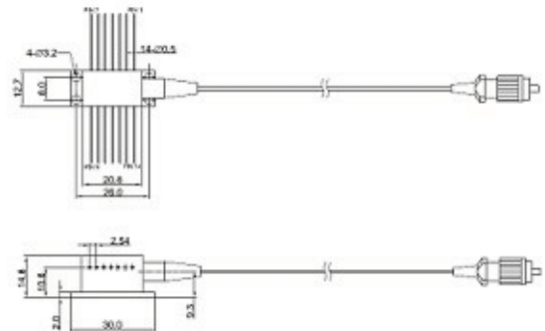
## BEAM PROFILE



## MACHINE DRAWING



B82 Package



14-Pin Package

**Distributors Wanted World-wide!  
Welcome to Contact us for Cooperation!**

Please visit: <http://en.wavespectrum-laser.com.cn/Products/SMPLD/for 405nm~1610nm single mode pigtailed LDM.>  
Send email to: [sales@wavespectrum-laser.com.cn](mailto:sales@wavespectrum-laser.com.cn).

**We Focus on LASER**

2-2-1504 2# HaiTai Innovation 6th Rd XiQing Dist,300392,TianJin,China  
Email:[sales@wavespectrum-laser.com.cn](mailto:sales@wavespectrum-laser.com.cn) Tel:+86-022-8793 1118  
Copyright:Wavespectrum Laser Group Limited All Rights Reserved.

