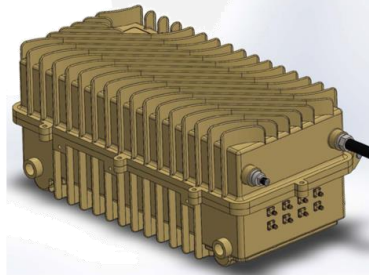


LRS-16-OD



DEVICE

Lightwave Receiver System Design for Outdoors

OVERVIEW

The Optilab LRS-16-OD is a ruggedized, fully integrated system designed for multiple channel RF over Fiber (RFoF) applications. This high density system provides an efficient platform for outdoor deployment environments with centralized control/monitoring. LRS-16-OD can accommodate up to 16 RFoF modules internally. A wide variety of Optilab modules can be integrated into this platform including Optilab PR (Photo Receiver), PD (Photo Detector), EDFA(Erbium-Doped Fiber Amplifier) and passive WDM devices in a variety of combinations. This outdoor model features redundant power supplies and a ruggedized weather resistant aluminum housing for remote location deployment. With the LRS management software, the system and module parameters may be controlled and monitored over optical fiber communication. Contact Optilab for more information.

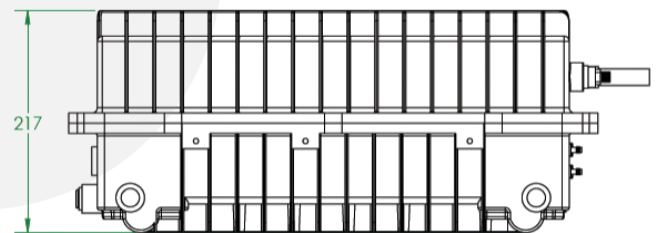
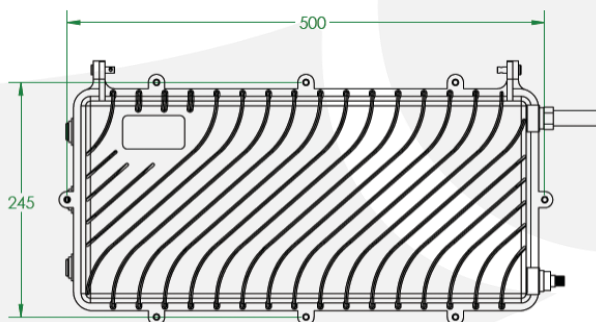
FEATURES

- High-capacity outdoor housing for 16 modules:
 - PR (Photo Receiver)
 - PD (Photo Detector)
 - EDFA (Erbium-Doped Fiber Amplifier)
 - Passive (Mux, splitter, VOA)
- Complete customization of RFoF system
- LRS Management software for control/monitoring of all modules
- Weather resistance aluminum cast housing
- Remote control. RS-485 over fiber

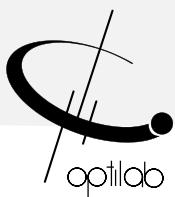
USE IN

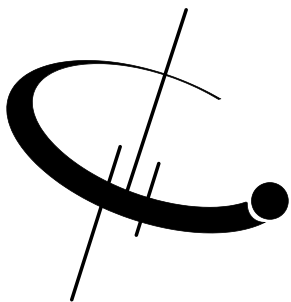
- Multiple channel RFoF system
- Multiple satellite antenna distribution
- Multiple wavelength RFoF link over single fiber

MECHANICAL DRAWING



Dimensions in mm





LRS-16-00

SPECIFICATIONS

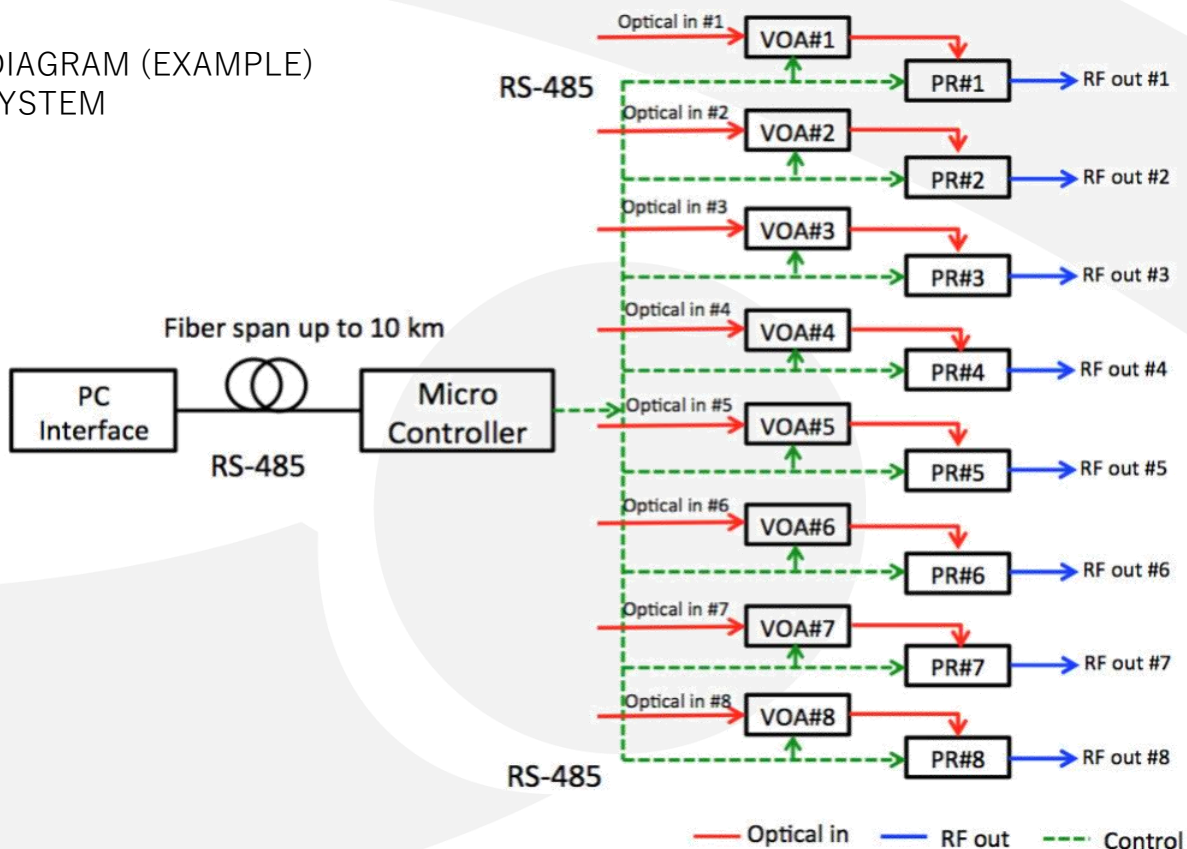
Operating Temperature	-45oC to +70oC
Storage Temperature	-55oC to +85oC
Dimensions	500mm x 245mm x 217mm
Weight	15 kg to 20 kg
Power Supply	Dual redundant
Power Requirement	110/240 VAC, 50-60 Hz, (2A max. optional), DC power supplies available

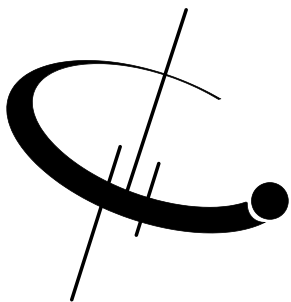
GENERAL

Local	LED for status display
Remote	Optilab LRS management software
RF Connector	K type, V type, or SMA depending upon RF requirements
Optical Connector	Armored fiber with FC/APC
Interface Connector	Armored fiber with FC/APC
Remote Control	RS-485 interface over fiber

MECHANICAL

FUNCTIONAL DIAGRAM (EXAMPLE) 8 x VOA + PR SYSTEM





LRS-16-OD

OPTILAB'S MODULES AVAILABLE FOR INTEGRATION WITH LRS-16-OD

PR SERIES

PR-12-M	12 GHz Photoreceiver Module
PR-20-M	20 GHz Photoreceiver Module
PR-23-M	23 GHz Photoreceiver Module
BPR-20-M	20 GHz Balanced Photoreceiver Module
BPR-23-M	23 GHz Balanced Photoreceiver Module

MD SERIES

PD-20-M	20 GHz Photodiode Module
PD-30-M	30 GHz Photodiode Module
PD-40-M	40 GHz Photodiode Module
PD-50-M	50 GHz Photodiode Module

EDFA SERIES

EDFA-PA-M	25 dB Gain Pre-Amp EDFA Module, C-band
EDFA-18-LC-M	18 dBm EDFA Module with Low Current Consumption

PASSIVE

DeMUX-4	4 Channel DWDM Multiplexer, 200 GHz spacing
DeMUX-16	16 Channel DWDM Multiplexer, 200 GHz spacing
DeMUX-40	40 Channel DWDM Multiplexer, 200 GHz spacing
SPLT-4	4 Channel Splitter
SPLT-8	8 Channel Splitter
SPLT-16	16 Channel Splitter
VOA	Variable Optical Attenuator

