

# RA-C1-15-R



## DEVICE

## 15 dB Gain Raman Amplifier, 1520 nm to 1560 nm

## OVERVIEW

Optilab Raman Amplifier Rackmount Units are designed for distributed Raman amplification in C-Band at 1520-1560 nm. The RA-C1-15-R unit provides over 15 dB On/Off gain flattened amplification from 1520nm to 1560nm, thus can support up to 50 DWDM channels. Each of the two pump channels is configured with two high power pump laser diodes and one polarization beam combiner (PBC). The pump wavelengths are 1426nm and 1445nm. The unit includes micro-controller based laser current control circuitry for enhanced stability and reliability. RA-C1-15-R is an ideal amplifier for high channel count DWDM 40G/100G transmission and fiber sensor systems. It is equipped with LCD touch screen and LabVIEW (TM) remote user interface for easy operation. Contact Optilab for more information.

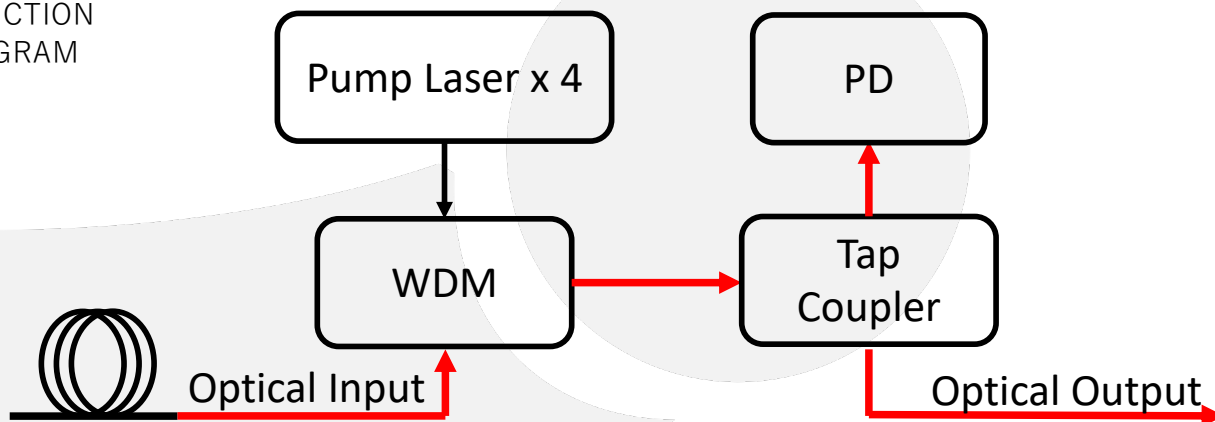
## FEATURES

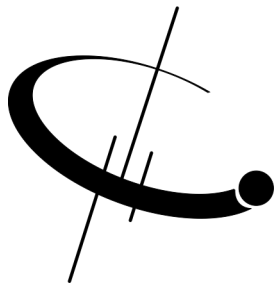
- 1520 nm – 1560 nm
- Over 15 dB On/Off Gain
- Gain flatness of  $< \pm 1.5$  dB
- Excellent Stability
- Up to 50 DWDM Channels
- Touch Screen LCD & USB Interface

## USE IN

- Long Haul / Ultra-Long Haul Systems
- Long Repeaterless Links
- Low Latency Links
- Multi-Channel DWDM Networks
- 40 / 100 Gbps Transmission

## FUNCTION DIAGRAM





# RA-C1-15-R

## SPECIFICATIONS

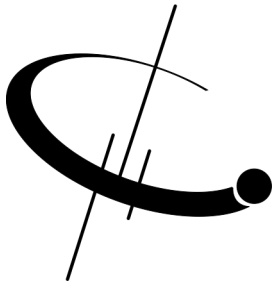
### GENERAL

Pump Wavelengths	1426, 1445
Operating Wavelength	1520 nm to 1560 nm
Input Signal Level	-40 to -10 dBm
Pump Power	Up to 750 mW
Averaged Gain @ -15 dBm Input	> 15 dB
Gain Flatness	< ±1.5 dB
Signal Insertion Loss	< 1 dB
Output Stability	< ± 0.1 dB for 24 hours
Degree of Polarization	< 5% for each channel

### MECHANICAL

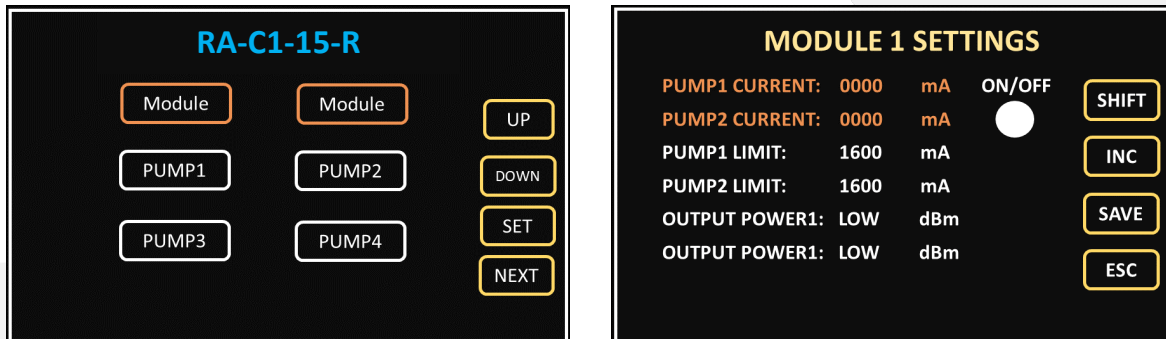
Operating Temperature	-5°C to + 55°C
Storage Temperature	-40 °C to 80 °C
Operating Humidity	0% to 90% Relative Humidity
Power Supply	110 – 240 VAC
Remote Port	USB 2.0
Dimensions	3U: 450 mm x 615 mm x 137 mm
Optical Input Fiber	SMF-28 with 3 mm Jacket (no connector)
Output Fiber Connector	FC/APC



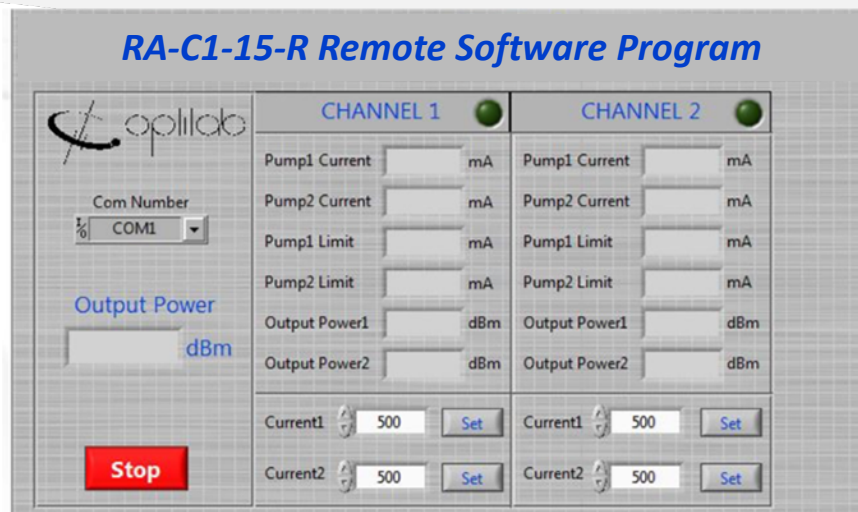


# RA-C1-15-R

Touch Screen Interface: easy adjustment of pump current settings



LabVIEW Remote Control Interface



Typical Application Diagram

